

**Step 1: Install your network adapter card into your PC.**

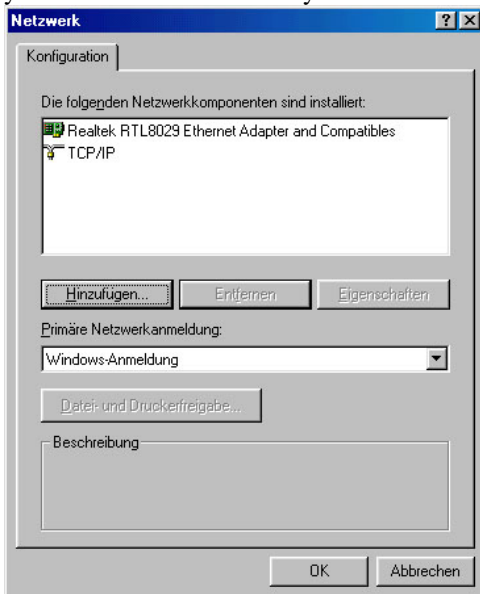
See the installation guide of your network adapter card.

**Step 2: Make sure that your twisted pair cable is not connected to the network socket.**

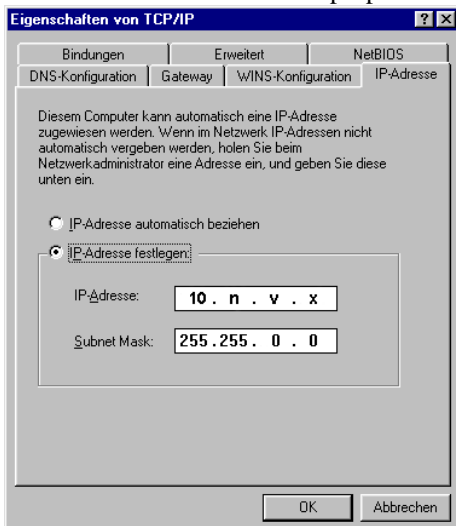
Power on your PC. Windows should detect the network adapter card automatically and ask for the appropriate drivers if they are not already known.

**Step 3: Installation and configuration of TCP/IP**

Choose „properties“ in the start menu and then click on the configuration item. In the configuration window, doubleclick on “network”. Instead of “Realtek RTL...” you should see the name of your network adapter card.



If you can't find "TCP/IP" in the window above, choose „install...“ and “protocol” (microsoft) and then “TCP/IP”. You don't need any other protocols. Now mark “TCP/IP” and click on “properties”.

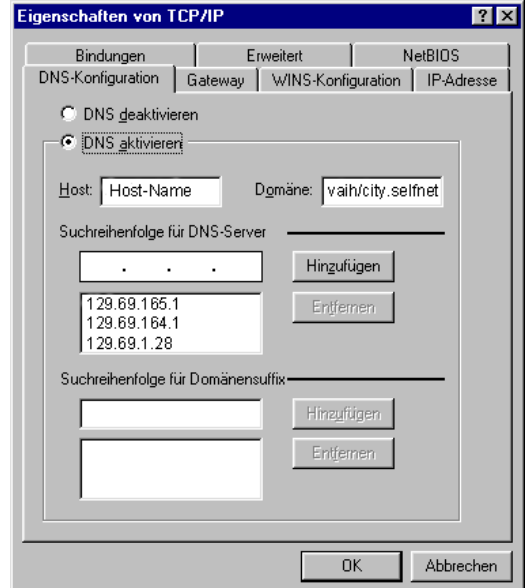


Enter your IP-adress, your subnet-mask and the standard gateway.

In the window below you have to enter the address of your gateway and add it to the configuration with the “add”-button.



Finally you have to enter the DNS-server addresses:



You have to activate DNS and add each server to the current settings by using the “add”-button. In the „host“ and „domain“ fields, you have to enter your computer's name and the network name. Leave all other settings unchanged and click on “OK”. Reboot your system.

**Step 4: When you have successfully checked all entries, connect the network cable.**

Have fun!