

Step 1: Install your network adapter card into your PC.

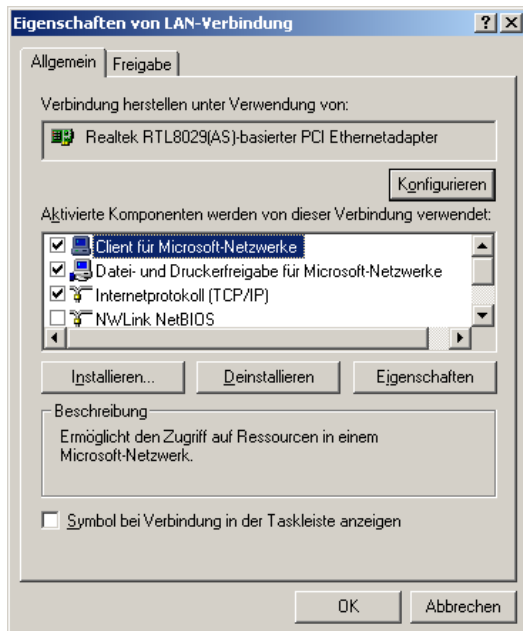
See the installation guide of your network adapter card.

Step 2: Make sure that your twisted pair cable is not connected to the network socket.

Power on your PC. Windows should detect the network adapter card automatically and ask for the appropriate drivers if they are not already known.

Step 3: Installation and configuration of TCP/IP

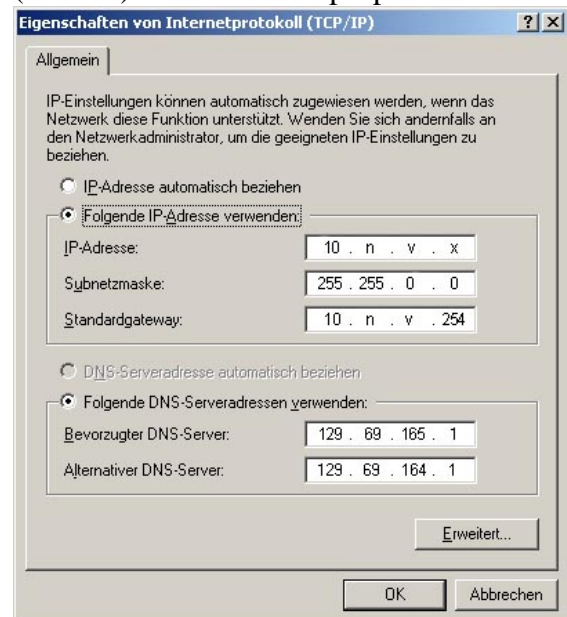
Choose „properties“ in the start menu and then click on the configuration item. In the configuration window, doubleclick on “network properties” or something that sounds similar. A doubleclick on “LAN-connection” will lead you to the following window:



Instead of “Realtek RTL...” you should see the name of your network adapter card. (If you don’t find the item “LAN-connection”, choose “new connection” and follow the instructions to create a new LAN-connection.)

If you can’t find the entry „internet protocol (TCP/IP)“ in the window above, choose „install...“, “protocol” and then

“TCP/IP”. You don’t need any other protocols. Now mark “internet protocol (TCP/IP)” and click on “properties”.



Choose „use following IP-address“ and enter your IP-adress, your subnet-mask and the standard gateway. Now choose „use following DNS-servers“ and enter the DNS-server addresses. Then click on “OK” to close this window and then leave all following windows with “OK” or “close”. If windows demands a reboot, you have to restart your computer.

Afterwards, check all entries again and make sure that they all are correct.

Step 4: When you have successfully checked all entries, connect the network cable.

Have fun!